

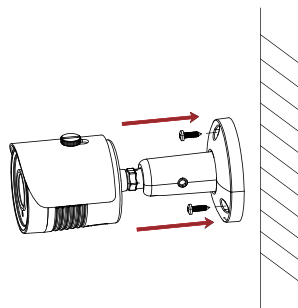
# Camera

## Quick Installation Guide

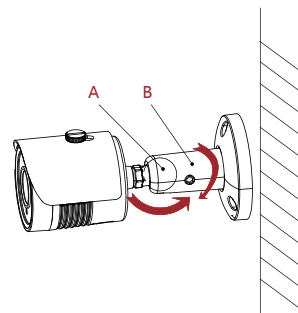
### Remind :

- Fix expansion rubber plugs to the wall first if it is concrete wall. Install it directly with screws if it is a wooden wall.
- The installation of all terminal equipment such as control, display, and recording of the camera should be smooth and easy to operate. should
- All cables in the control room shall be provided with cable troughs and inlet holes according to the installation location of the equipment. They shall be arranged, bundled neatly, numbered, and permanently marked.
- The pictures in this manual are for reference only. Please refer to the actual product for the final product.

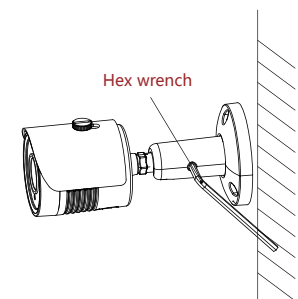
### Small Waterproof Series



- Fix the bracket to the wall with screws.



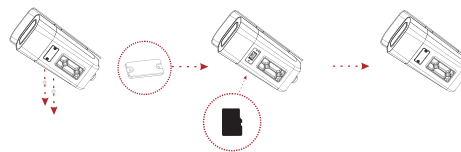
- Adjust the viewing angle. Loosen the screws to adjust the angle (A for vertical angle, B for axial angle).



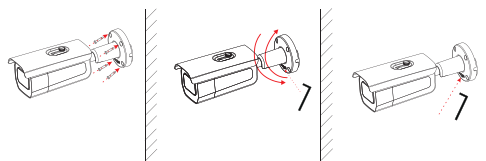
- Tighten the screws with hex wrench to complete the installation.

### Large Waterproof Series

If you have an external card slot, loosen the two screws first, remove the card cover, attach the memory card, and finally lock the card cover.

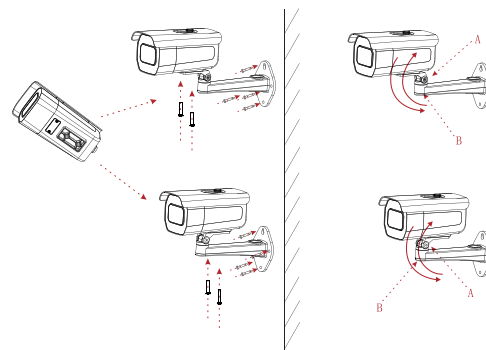


#### Rear Mounting Bracket Installation



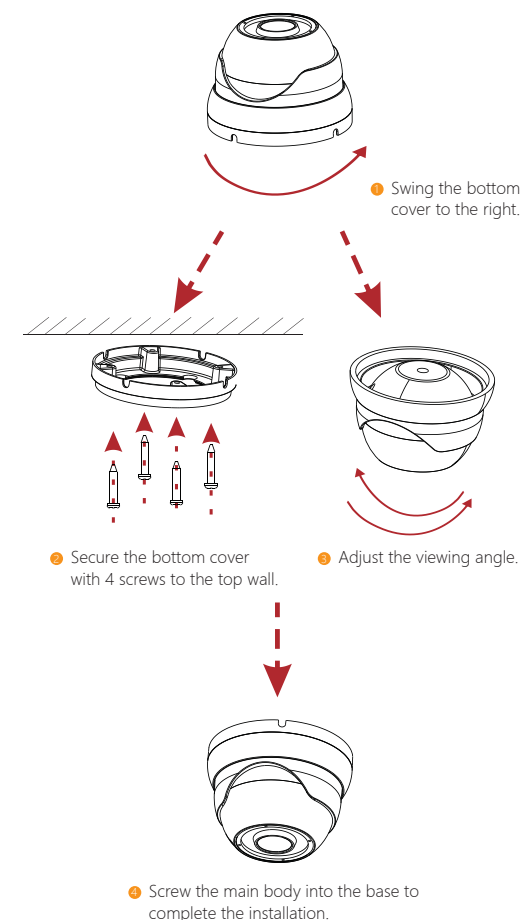
- Fix the bracket to the wall with 4 screws
- Adjust the viewing angle. Loosen the regulation screw to adjust the angle.
- Tighten the screws with hex wrench to complete the installation.

#### Bottom Mounting Bracket Installation



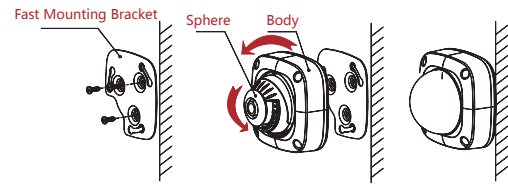
- Fix the camera to the bracket with screws. The bracket head can be pre-mounted or post-mounted, and then fixed to the wall with 4 screws.
- Adjust the viewing angle. Loosen the screws at A/B to adjust the angle (A for horizontal angle, B for vertical angle). Tighten the screws to complete the installation.

### Conch Series



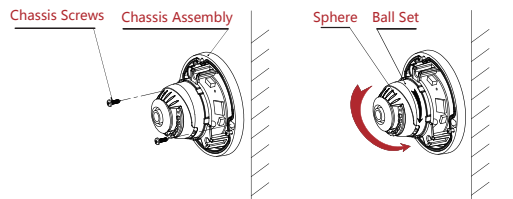
## Small Hemisphere Series

### Fast Mounting Bracket Installation

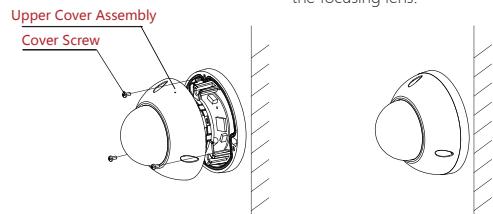


- Fasten the quick mount to the wall with screws.
- Adjust the lens angle by rotating the sphere and then hang the machine into the quick mount by rotating the body.
- Installation is complete.

### Chassis Installation



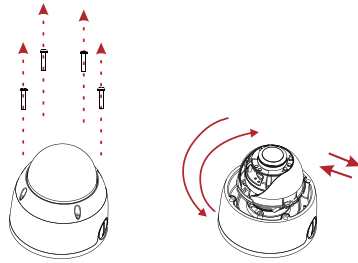
- Lock the chassis assembly to the wall with 2 screws.
- Through the vertical rotation of the ball and the axial rotation of the focusing lens.



- Lock the upper cover assembly to the chassis assembly with 3 screws.
- Installation is complete.

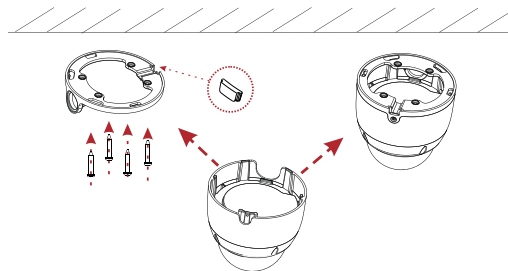
## Big Hemisphere Series

### Top Loading

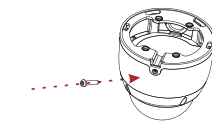


The factory default is the best angle, if you need to adjust:

- Loosen 4 screws and remove the cover.
- Rotate the movement horizontally and vertically to adjust the angle.



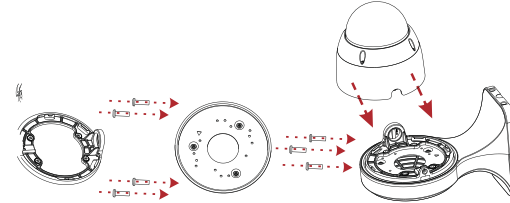
- Remove the rubber plug and fix the base with 4 screws.
- Slide the main body into the notch into the base.



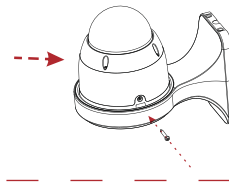
- Lock the screws, fix the ball to complete the installation.

## Big Hemisphere Series

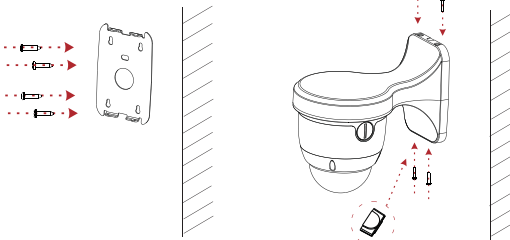
### Wall Mounting



- Screw the base and bracket mounting plate to the bracket body with screws.
- Snap the camera body into the base.

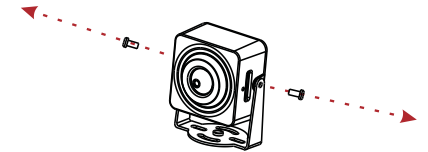


- Fix the camera screw to complete the installation.

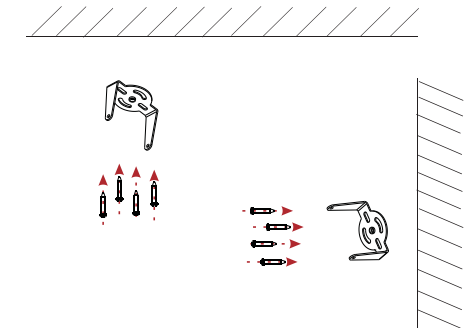


- First remove the fast iron from the bracket body and fasten the fast iron to the wall with 4 screws.
- Remove the rubber plug from the outlet hole, insert the main body of the camera with the camera into the quick iron, and fix the 4 screws.

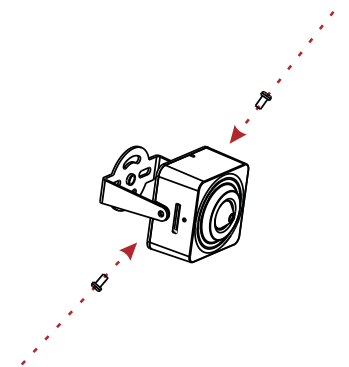
## Microcomputer Series



- Loosen 2 screws to separate the bracket from the camera body.



- Use 4 screws to lock the bracket to the top wall or lock it to the side wall.



- Use 2 screws to lock the camera body and the bracket together. Do not lock first, adjust the angle, tighten the screws to complete the installation.